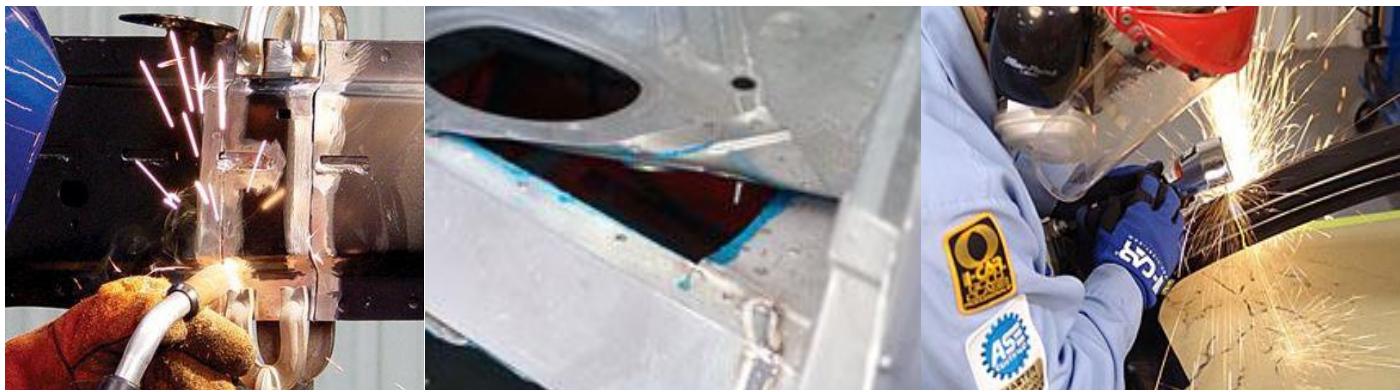


Collision Repair Professionals

STRUCTURAL TECHNICIANS



THE ROLE

A Steel Structural Technician restores vehicle dimensions and structural integrity to collision-damaged vehicles. He or she uses three-dimensional measuring and straightening equipment to diagnose and return damaged frame or unibody parts to manufacturer's specifications. Hand tools and power tools are used to remove or repair damaged parts, weld as needed, and properly install new parts. The Steel Structural Technician also works with a variety of metals and plastics, as well as glass, electrical and mechanical parts.

PRO LEVEL 1 INTRODUCTION FOR STRUCTURAL TECHNICIANS (to be completed first)

| Knowledge Areas Required | Course Name | Credit Points |
|-------------------------------|--|---------------|
| Core Programs | | |
| Corrosion Protection | CPS01 – Corrosion Protection | 1 |
| Vehicle Construction | FCR01 – Fundamentals of Collision Repairs | 1 |
| Foams | FOM01 – Automotive Foams | 1 |
| Advanced High Strength Steels | SPS07 – Steel Unitised Structures Technology and Repair | 1 |
| Recommended Courses | | |
| Measuring & Analysis Damage | MEA01 - Measuring | 1 |
| Spot Welding | WCS04 – Squeeze-Type Resistance Spot Welding | 1 |
| Safe Working Practices | WKR01 – Hazardous Materials, Personal Safety and Refinish Safety | 1 |

PRO LEVEL 2 TRAINING COURSES – Points needed 4

| Knowledge Areas Required | Course Name | Credit Points |
|--|---|---------------|
| Adhesive Bonding | ADH01 – Adhesive Bonding | 1 |
| Air Conditioning | AIR02e – Air Conditioning Part 1 | .5 |
| Air Conditioning | AIR03e – Air Conditioning Part 2 | .5 |
| Safety with Hybrids & Alternative Fuels | ALT03 – Alternative Fuel Vehicle Damage Analysis and Safety | 1 |
| Welding | BRZ02 - MIG Brazing Hands-On Skills Development | 0 |
| Steering & Suspension | DAM06 – Steering & Suspension Damage Analysis | 1 |
| Stationary Glass | GLA02 – Stationary Glass | 1 |
| Heating & Cooling | HEA02e – Cooling System Operation and Parts | .5 |
| Heating & Cooling | HEA03e – Cooling System Operation and Parts | .25 |
| Advanced High Strength Steel | SPS09 – Best Practices of High Strength Steel | 1 |
| Structural Replacement | SPS10 – Replacement of Steel Unitised Structures | 1 |
| Structural Alignment | SSS01 – Structural Straightening Steel | 1 |
| MIG/MAG Welding Preparation - Mandatory before Certification | WQPA3 – Steel GMA (MIG/MAG) Welding Theory and Preparation | 0 |
| Welding Certification | WCSA3 – Welding Testing & Certification | 5 |

PRO LEVEL 3 TRAINING

| Knowledge Areas Required | Course Name | Credit Points |
|----------------------------------|--|---------------|
| Full frame classic repair | FFR01 – Full-Frame Partial Replacement | 1 |
| Sectioning Structural Components | SPS11 – Sectioning of Steel Unitised Structures | 1 |
| Steering & Suspension | STE02 - Suspension Systems | 1 |
| Steering & Suspension | STE03 - Rack and Pinion and Parallelogram Steering Systems | 1 |
| Steering & Suspension | STE04 - Wheel Alignment and Diagnostic Angles | 2 |

ONGOING TRAINING – Any Pro Level 2, 3 or New Technology Courses

| Knowledge Areas Required | Course Name | Credit Points |
|--------------------------|--|---------------|
| New Technology | Any level 2 or 3 courses or New Technology courses | |

For further information regarding this topic please go to www.i-car.com.au

For any queries regarding this please email admin@i-car.com.au or phone (07) 3219 9088