

Holden Aftersales. Parts Tech Line News.



TO: Parts, Bodyshops & Service Managers

BULLETIN: Parts 2013-PT276

FROM: Parts Technical / Service Engineering

DATE: Issued 7th October 2013

SUBJECT: MY09-12 VE WAGON LIFTGATE PANEL ASSEMBLY REPLACEMENT

Original MY09-12 liftgate panel assemblies have been replaced by the MY12.5 design. To fit the new liftgate panel assembly an additional latch kit must also be fitted and any further service replacement will be impacted. Components will be available to service for both the original and new designs.

Liftgate panel assembly instructions can be located in eSI and must be followed to ensure replacement is in accordance with manufacturers' guidelines. Latch kit instructions are only provided in the liftgate latch repair kit.

Note: This is not applicable to MY12.5 vehicles, which can be identified by RPO (+AAP) in the list of vehicle options.

- **Always refer to EPC for all the latest part numbers.**

LIFTGATE PANELS & UNIQUE PART NUMBER REFERENCE CHART

ORIGINAL P/N	NEW P/N	PART DESCRIPTION
92220335 - NLA	92260151	PANEL ASM-L/GATE – COMPLETE PANEL ASSEMBLY
92220334	NO CHANGE	PANEL,L/GATE – OUTER SKIN PANEL ONLY
	92458626	LATCH KIT, L/GATE - FIT TO MY09-12 LIFTGATE WHEN FITTING 92260151
92202968		LATCH, L/GATE - SUIT ORIGINAL LIFTGATE ONLY
	92458243	LATCH, L/GATE - NEW L/GATE FITTED TO MY09-12 (UNIQUE P/N)
92199272		HARNESS ASM, L/GATE - SUIT ORIGINAL L-GATE ONLY
	92458560	WIRING HARNESS, L/GATE - NEW L/GATE FITTED TO MY09-12 (UNIQUE P/N)

Latch Kit Contents

The following chart lists the component parts of latch kit part number 92458626. It also includes the original design parts for reference and the serviceability

The wiring harness and latch assembly are unique parts and have been designed to allow use of the MY12.5 liftgate panel assembly into MY09-12. The contents listed within the latch kit become the service replacement components for these repaired vehicles.

Note: The wiring harness and latch from MY12.5 (+AAP) vehicles are not compatible and must not be fitted to MY09-MY12.

Holden Ltd ABN 006 893 232 Subsidiary of General Motors Corporation

No Holden Dealer or other person is authorised or permitted to make any statement assertion or undertaking in relation to the quality, performance, characteristics, descriptions, or fitness for any purpose of any Holden product or in any Holden product sold by Holden which is at variance with any written statement assertion or undertaking on any of these subjects given or made by Holden Service Parts Operations Division of Holden Ltd, published sales literature, and the company does not accept any liability for any such unauthorised action. Prices are recommended only and are subject to change without notice.

Holden Service Parts Operations: 191 Salmon Street, Port Melbourne, Victoria 3207 Australia
All correspondence to: H204E / 191 Salmon Street, Port Melbourne, Victoria 3207 Australia

Telephone (03) 9647 1111
Facsimile (03) 9797 7354



Holden.
Genuine Parts.

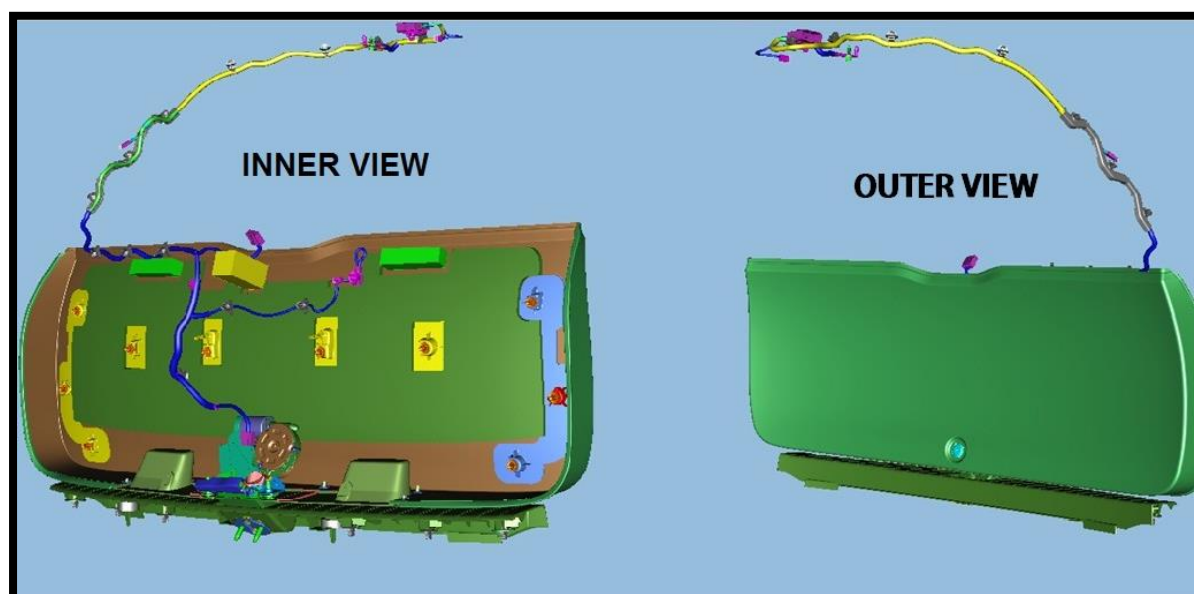
Holden Aftersales. Parts Tech Line News.



P/N 92458626 - LATCH KIT – PART NUMBER REFERENCE CHART				ORIGINAL MY09-12 SERVICE PARTS
CONTENT P/N	QTY	DESCRIPTION	KIT COMPONENT SERVICEABILITY	
92458243	1	LATCH ASSEMBLY, L/GATE (PART IS A UNIQUE KIT PART)	AVAILABLE FOR SERVICE PART MUST ONLY BE FITTED TO MY09-MY12 (EXCL –AAP) IF THIS KIT & NEW LIFTGATE IS FITTED	92202968
92458627	1	INSTRUCTION, L/GATE	N/A – SUPPLIED ONLY IN KIT	N/A
92458560	1	WIRING HARNESS, L/GATE (PART IS A UNIQUE KIT PART)	AVAILABLE FOR SERVICE PART MUST ONLY BE FITTED TO MY09-MY12 (EXCL –AAP) IF THIS KIT & NEW LIFTGATE IS FITTED	92199272
92266764	1	TAPE, R/CMPT SILL TRIM PLATE	AVAILABLE FOR SERVICE	92226693
92260153	1	STRIKER ASM, LIFTGATE LATCH	AVAILABLE FOR SERVICE	92228062
92458602	1	COVER, LIFTGATE LATCH	AVAILABLE FOR SERVICE	NONE
92259920	1	PANEL ASM, REAR-END LOWER TRIM	AVAILABLE FOR SERVICE	92255750
92259338	1	PANEL ASM, LIFTGATE TRIM	AVAILABLE FOR SERVICE	92246151
13167521	1	PLUG, LIFTGATE LATCH RELEASE	AVAILABLE FOR SERVICE	SAME
11609813	2	BOLT/SCREW, LIFTGATE LOCK	AVAILABLE FOR SERVICE	90579454
11518445	2	BOLT/SCREW, LIFTGATE STRIKER	AVAILABLE FOR SERVICE	24441558

VISUAL IDENTIFICATION: LATCH KIT

92458626 – Latch Kit



Holden Ltd ABN 006 893 232 Subsidiary of General Motors Corporation

No Holden Dealer or other person is authorised or permitted to make any statement assertion or undertaking in relation to the quality, performance, characteristics, descriptions, or fitness for any purpose of any Holden product or in any Holden product sold by Holden which is at variance with any written statement assertion or undertaking on any of these subjects given or made by Holden Service Parts Operations Division of Holden Ltd, published sales literature, and the company does not accept any liability for any such unauthorised action. Prices are recommended only and are subject to change without notice.

Holden Service Parts Operations: 191 Salmon Street, Port Melbourne, Victoria 3207 Australia Telephone (03) 9647 1111
All correspondence to: H204E / 191 Salmon Street, Port Melbourne, Victoria 3207 Australia Facsimile (03) 9797 7354



Holden.
Genuine Parts.

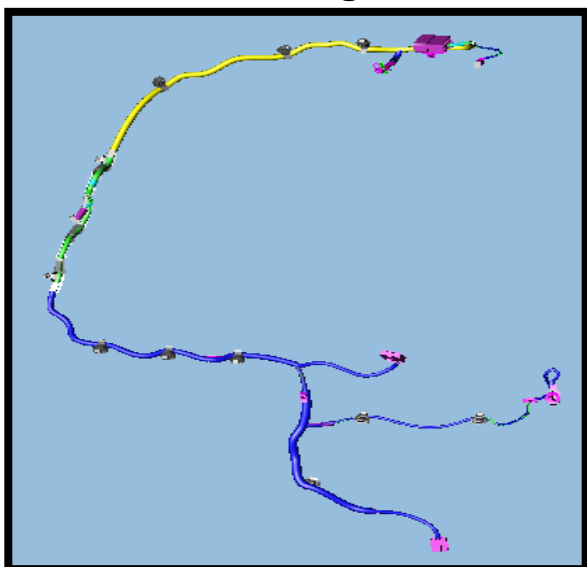
Holden Aftersales. Parts Tech Line News.



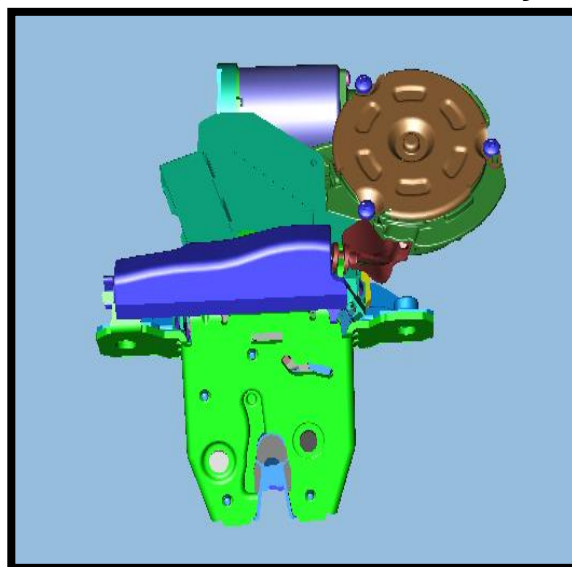
VISUAL IDENTIFICATION: LATCH KIT COMPONENTS

Liftgate design confirmation is required for all service repairs to ensure correct parts are ordered. Wiring harness & latch shown below are unique parts and must be fitted for service replacement.

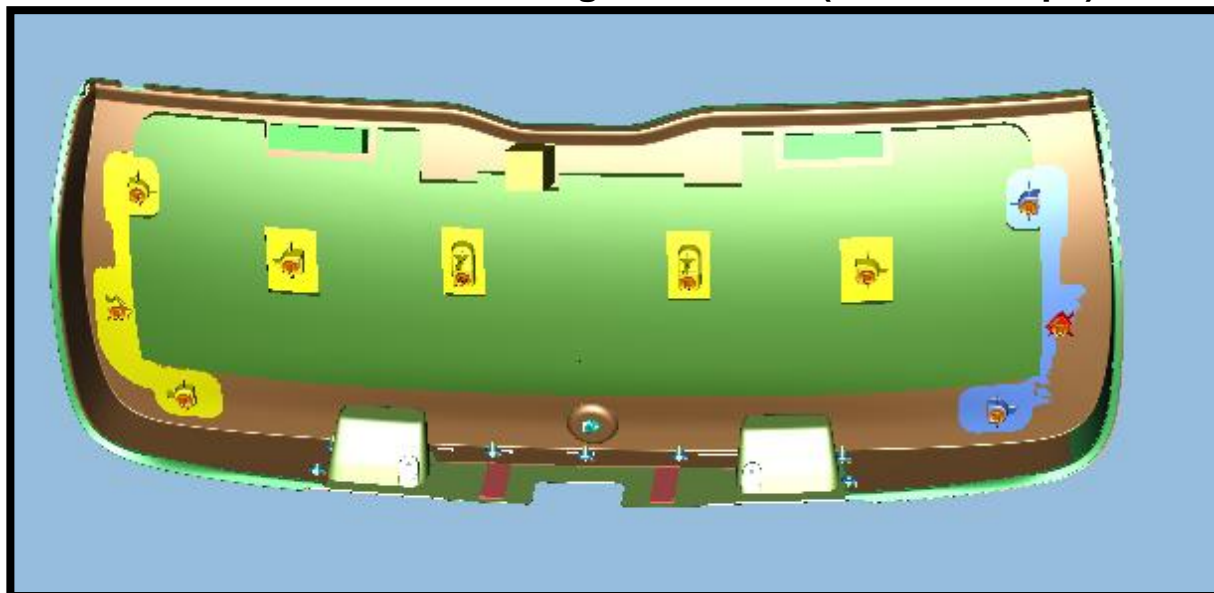
2458560 - Wiring Harness



92458243 - Latch Assembly



92259338 – Panel Trim Liftgate Finisher (Includes Clips)



Holden Ltd ABN 006 893 232 Subsidiary of General Motors Corporation

No Holden Dealer or other person is authorised or permitted to make any statement assertion or undertaking in relation to the quality, performance, characteristics, descriptions, or fitness for any purpose of any Holden product or in any Holden product sold by Holden which is at variance with any written statement assertion or undertaking on any of these subjects given or made by Holden Service Parts Operations Division of Holden Ltd, published sales literature, and the company does not accept any liability for any such unauthorised action. Prices are recommended only and are subject to change without notice.

Holden Service Parts Operations: 191 Salmon Street, Port Melbourne, Victoria 3207 Australia
All correspondence to: H204E / 191 Salmon Street, Port Melbourne, Victoria 3207 Australia

Telephone (03) 9647 1111
Facsimile (03) 9797 7354

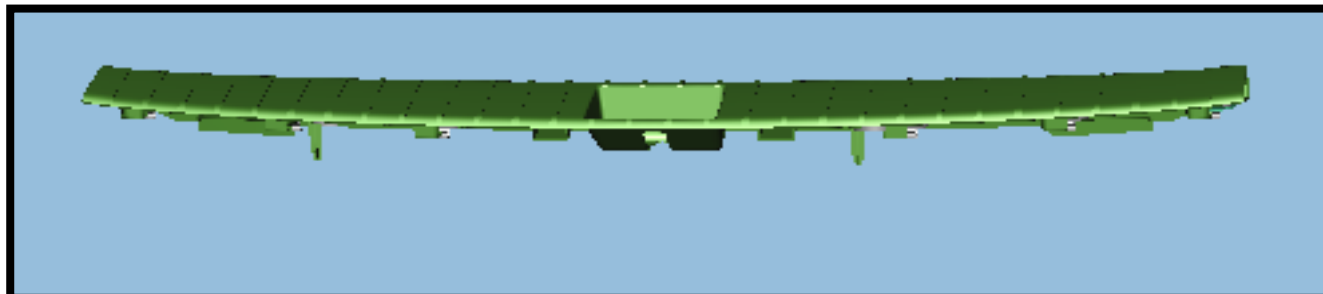


Holden.
Genuine Parts.

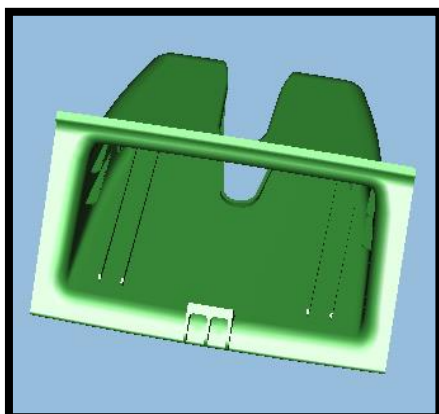
Holden Aftersales. Parts Tech Line News.



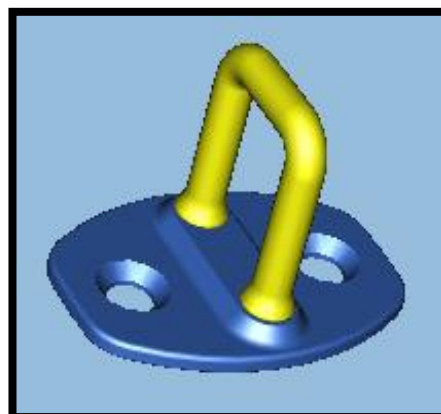
92259920 – Panel Trim Vehicle Body lower finisher (Includes Clips)



92458602 – Cover Liftgate Latch



92260153 – Striker Assembly



VISUAL IDENTIFICATION: FASTENERS

- 11609813 x 2 – Liftgate Latch Bolts
- 92266764 x 1 – Sill Trim Plate Tape
- 11518445 x 2 – Lower Striker Bolts



Holden Ltd ABN 006 893 232 Subsidiary of General Motors Corporation

No Holden Dealer or other person is authorised or permitted to make any statement assertion or undertaking in relation to the quality, performance, characteristics, descriptions, or fitness for any purpose of any Holden product or in any Holden product sold by Holden which is at variance with any written statement assertion or undertaking on any of these subjects given or made by Holden Service Parts Operations Division of Holden Ltd, published sales literature, and the company does not accept any liability for any such unauthorised action. Prices are recommended only and are subject to change without notice.

Holden Service Parts Operations: 191 Salmon Street, Port Melbourne, Victoria 3207 Australia
All correspondence to: H204E / 191 Salmon Street, Port Melbourne, Victoria 3207 Australia

Telephone (03) 9647 1111
Facsimile (03) 9797 7354



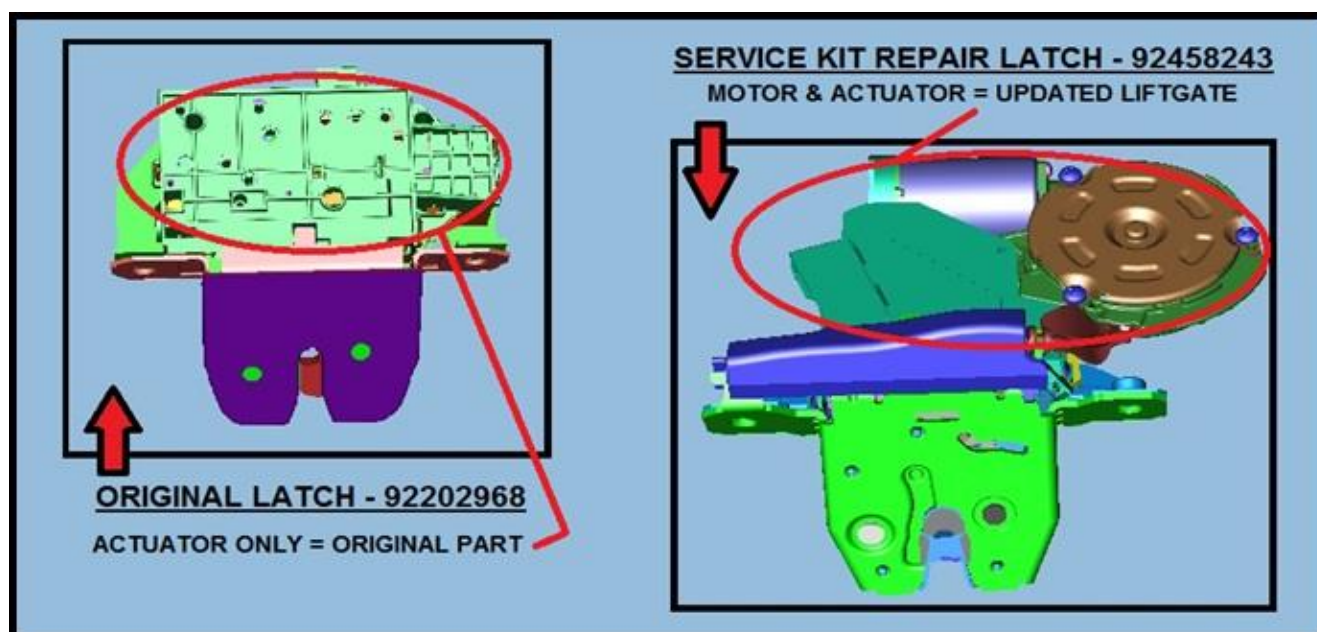
Holden.
Genuine Parts.

Holden Aftersales. Parts Tech Line News.



How to identify liftgate design for service replacement

The liftgate design must be identified on all MY09–12 VE Wagons. This will ensure correct service replacement parts are quoted and received. The following visual check of the latch assembly is to be used.



EPC, Fitting instructions and reference information

- The Liftgate Latch Kit and all components are listed within Holden Electronic Parts Catalogue (EPC). Please refer to your Holden Dealer.
- Always refer to Holden Approved Procedures on eSI for correct guidelines relevant to the repair or replacement of the liftgate panel assembly. The liftgate panel assembly replacement procedure can be obtained in eSI by searching the Document ID: 2490083 or alternatively select the following section eSI for liftgate replacement procedure: Body Repair–Collision Repair-Bolted Exterior Body Panels and Closures–Liftgate Replacement
- Customers /Panel Shops /Repairers are strongly advised purchase a subscription to eSI to ensure repair guidelines are being followed to the latest Holden standard.
- Latch kit fitting instructions are only supplied within the latch kit.

Holden Ltd ABN 006 893 232 Subsidiary of General Motors Corporation

No Holden Dealer or other person is authorised or permitted to make any statement assertion or undertaking in relation to the quality, performance, characteristics, descriptions, or fitness for any purpose of any Holden product or in any Holden product sold by Holden which is at variance with any written statement assertion or undertaking on any of these subjects given or made by Holden Service Parts Operations Division of Holden Ltd, published sales literature, and the company does not accept any liability for any such unauthorised action. Prices are recommended only and are subject to change without notice.

Holden Service Parts Operations: 191 Salmon Street, Port Melbourne, Victoria 3207 Australia
All correspondence to: H204E / 191 Salmon Street, Port Melbourne, Victoria 3207 Australia

Telephone (03) 9647 1111
Facsimile (03) 9797 7354



Holden.
Genuine Parts.

Holden Aftersales. Parts Tech Line News.



How to subscribe to eSI

The following website can be accessed to subscribe to online repair information:

www.acdelcotds.com

For help subscribing to this please contact Dominique via holden.repairinfo@gm.com

Please ensure all steps and items within this bulletin are referenced and followed prior to contacting dealers or parts technical. Fitting guidelines are supplied within the Latch kit and fitting requirements for the liftgate assembly are as directed within eSI.

Please always refer to EPC for the latest part numbers from possible future supersessions.

Regards,

Adam Downs
Service Parts Engineering
Parts Technical

Holden Ltd ABN 006 893 232 Subsidiary of General Motors Corporation

No Holden Dealer or other person is authorised or permitted to make any statement assertion or undertaking in relation to the quality, performance, characteristics, descriptions, or fitness for any purpose of any Holden product or in any Holden product sold by Holden which is at variance with any written statement assertion or undertaking on any of these subjects given or made by Holden Service Parts Operations Division of Holden Ltd, published sales literature, and the company does not accept any liability for any such unauthorised action. Prices are recommended only and are subject to change without notice.

Holden Service Parts Operations: 191 Salmon Street, Port Melbourne, Victoria 3207 Australia Telephone (03) 9647 1111
All correspondence to: H204E / 191 Salmon Street, Port Melbourne, Victoria 3207 Australia Facsimile (03) 9797 7354



Holden.
Genuine Parts.